

APPLETON COMPREHENSIVE DENTISTRY





Digital Restorative Dentistry

GLENN E APPLETON DDS





Ceramic blanks with varying density allowing for light absorption and translucency



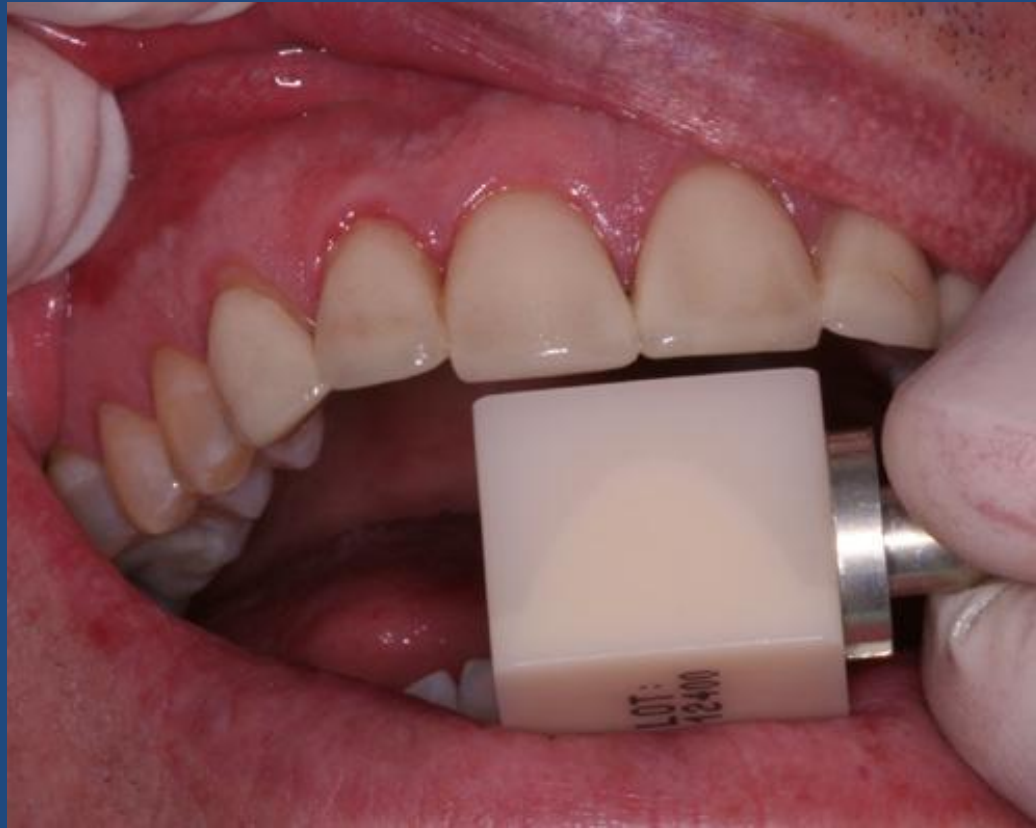
PFM crowns with unaesthetic shading



Teeth whitened with Korr bleaching technique and the central incisors replaced with Cerec Empress Cad crowns

Ceramic luecite blank with dome shaped 3d density





Teeth #'s 6-11 Pfm crowns
Patient wanted a "whiter " smile



Teeth #'S 6-11 replaced with CEREC Vita
Real Life luecite ceramic crowns

Implant supported Crowns



Milled zirconia custom abutment



Empress Cad crown tryin



Empress Cad crown stained and glazed and cemented

Posterior Crowns

Lithium Disilicate (Emax)

achieve optimal esthetics, virtually perfect contacts and occlusion, and impressive strength. Its unique lithium Disilicate ceramic provides flexural strength of 360-400 MPa, making it the ideal high-strength solution for single-unit anterior or posterior crowns, veneers, inlays, onlays, screw-retained implant crowns, 3-unit anterior bridges or restorations with minimum preparation dimensions.

Conventionally cement using resin ionomer cements or bond for maximum retention on nonretentive preparations. Lithium disilicate ceramic is biocompatible and provides more than double the flexural strength of IPS Empress® Esthetic.



Emax restorations are milled in a violet color, once crystalized in a ceramic oven they achieve their true color and glaze



Lower molar with failing amalgam restoration



Initial occlusal reduction



Final preparation with laser gingival troughing



Emax crown adjusted, crystalized, glazed and cemented



Recurrent caries on tooth #18,19 and 20



Tooth preparation design depends on caries removal and unsupported enamel



Final restorations cemented

Posterior Crowns

➤ Incoris- Bruxir

BruxZir Solid Zirconia is indicated for crowns, bridges, implants, inlays and onlays. It is an esthetic alternative to PFM metal occlusal/lingual or full-cast restorations. The chip proof durability of BruxZir is ideal for bruxers who have broken natural teeth or previous PFM restorations. BruxZir is also ideal when the patient lacks the preparation space for a PFM.





BruxZir (Incoris) restorations are milled in a starch white form



When the milled restorations are sintered in a ceramic oven they will convert to their respective shade and glaze



Fractured amalgam restoration with recurrent caries



BruxZir (Incoris) onlay cemented



TOOTH CHARACTERIZATION

Adjacent Tooth Staining Technique



Adjacent Tooth Staining Technique

Glaze Porcelain Surface



Adjacent Tooth Staining Technique

Dentin Characterization



Dentin A-2



Dentin a-2

Cervical/ incisal orange

Adjacent Tooth Staining Technique

- Dentin Body Stain



Adjacent Tooth Staining Technique

- Incisal Translucency



Adjacent Tooth Staining Technique

- Incisal Translucency



Adjacent Tooth Staining Technique

- Halo and Interproximal stain



Halo shade A-2 Stain



Halo Shade A-2 Stain

Interproximal White Stain

Adjacent Tooth Technique

- Interproximal White Stain



Adjacent Tooth Technique

- Fired Restoration



Posterior Staining Technique



Posterior Staining Technique

Glaze Porcelain Surface



Posterior Staining Technique

- Inclines



Inclines stained with A-2 Dentin

Posterior Staining Technique

- Incisal Stain



Incisal stain shade 11

Cusp tips stain white

Posterior Staining Technique

- Pit Fissure Stain



Pit Fissure stains Ochre

Posterior Staining Technique

- Fired



Inclines stained with A-2 Dentin