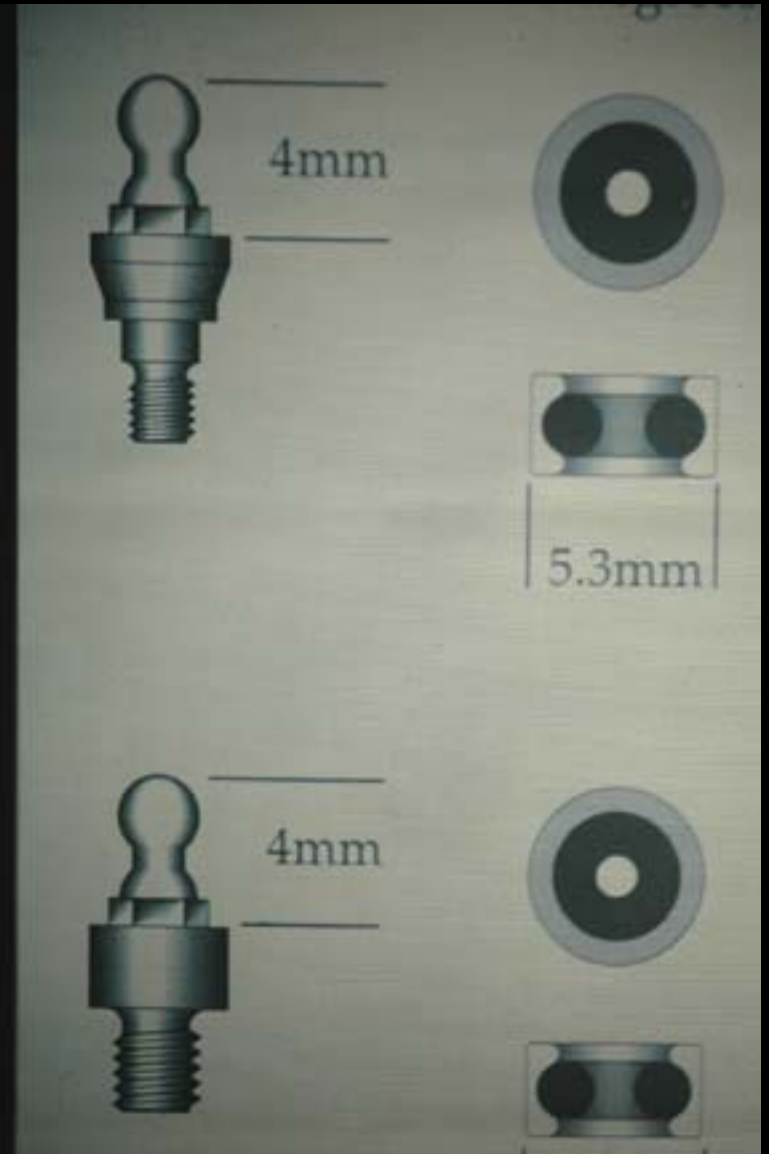


Implant Overdentures: Use of the O-Ring Implant Abutment

Dr. Michael J. Maginnis

Board Certified Specialist, Removable Prosthodontics

The O-Ring Overdenture Attachment



Direct (intraoral) attachment to denture base



VS.



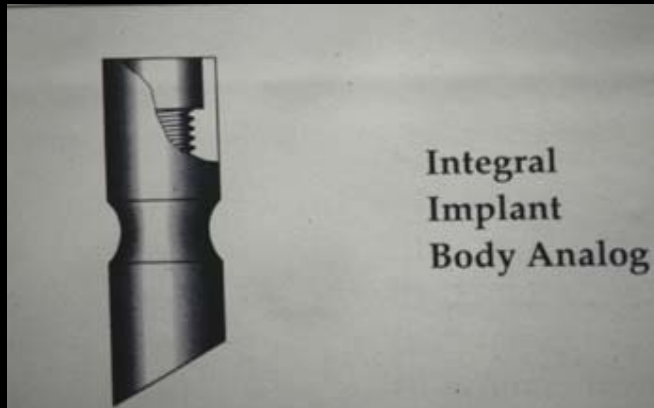
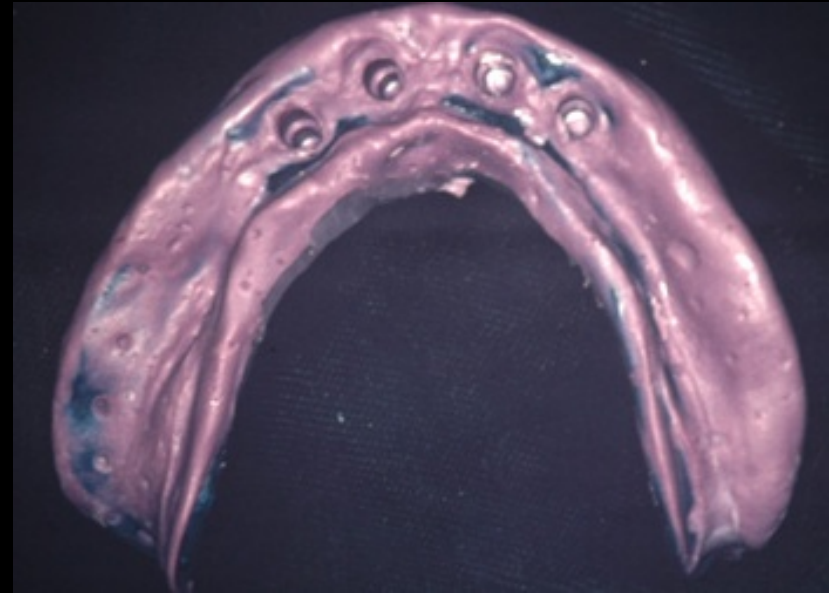
Indirect (laboratory) attachment to denture base

Abutment Transfer:



***Questionable accuracy with small brass
implant abutment analogs.***

Abutment Transfer:



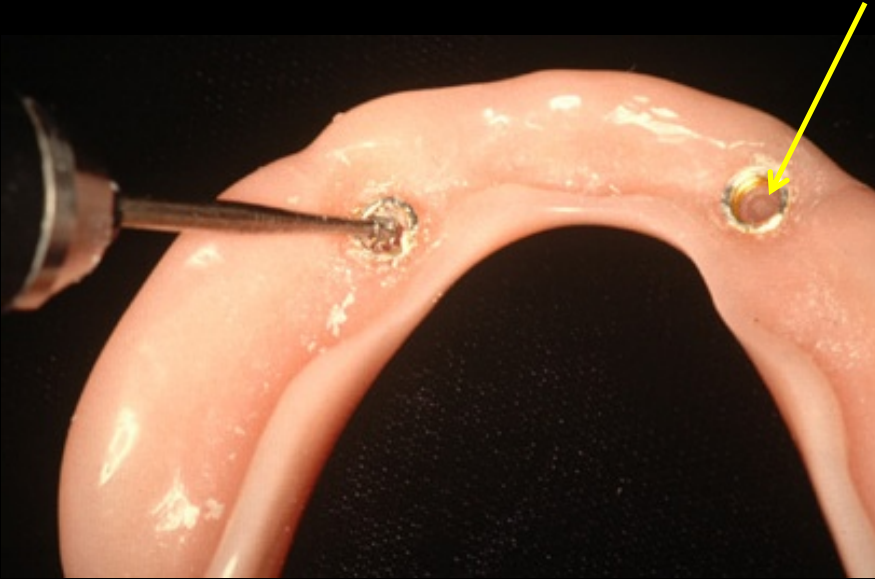
Superior accuracy and flexibility achieved through use of transfer copings and implant body analogs.

Abutment Transfer:



With a master cast that now mimics the mouth, the technician can alter the size and type of abutment head without the need to retake the impression.

Delivery Procedures of the Indirect O-Ring Attachment



Use #8 round burr to remove 1 to 2 mm of acrylic in area above ball head to allow for vertical movement of denture.
Insert red or black o-ring with string packer or ball burnisher.

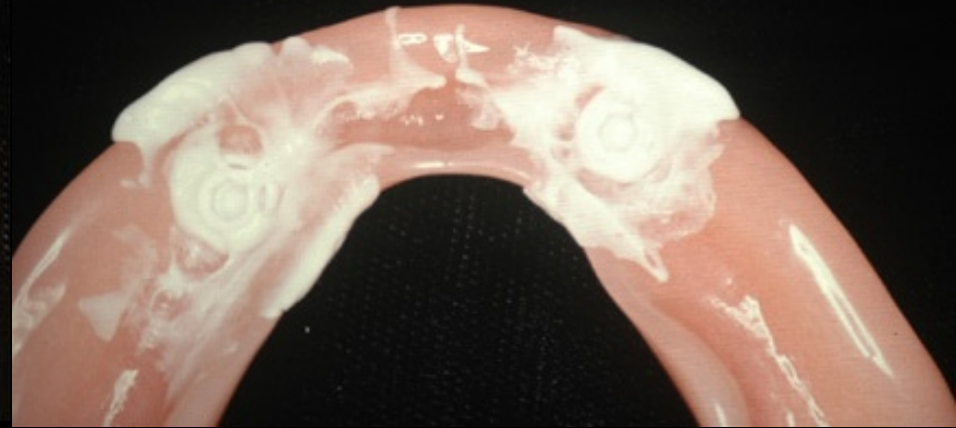
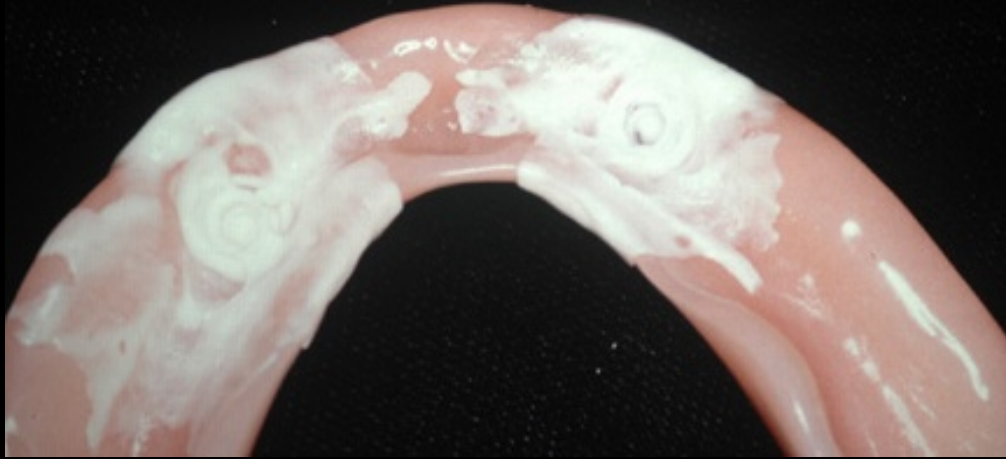


Direct attachment of o-ring housing to denture base:



Use Fit Checker (GC) silicone paste to relieve denture base to allow insertion of o-ring housing.

Direct attachment of o-ring housing to denture base:



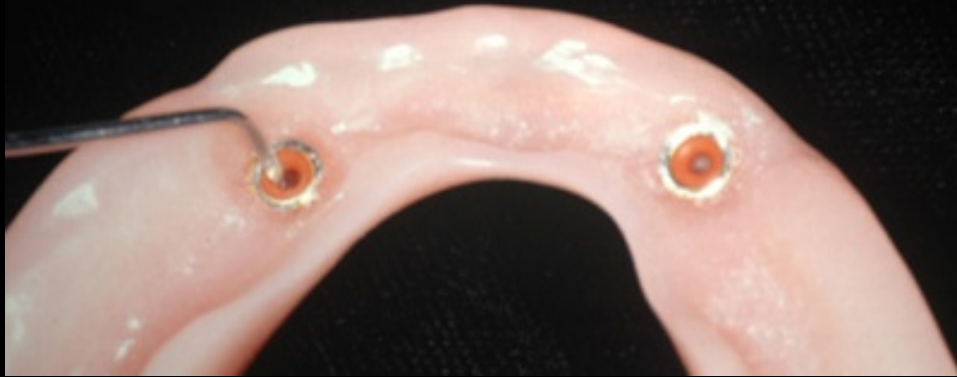
Use Fit Checker (GC) silicone paste to relieve denture base to allow insertion of o-ring housing.

Direct attachment of o-ring housing to denture base:



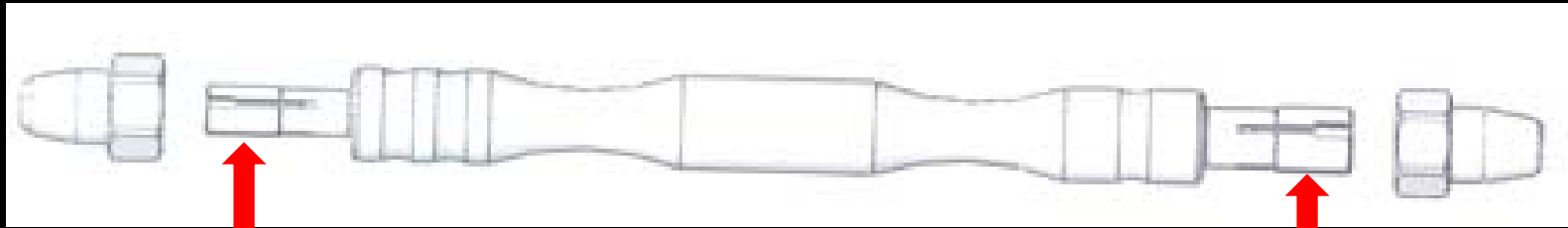
NOTES: 1. Create vent hole with 701 bur. 2. Block out abutment neck with rubber dam. 3. Use white disposable processing ring. 4. Use cold-cure repair resin – don't overfill hole.

Direct attachment of o-ring housing to denture base:



NOTES: 5. Discard white processing ring. 6. Relieve acrylic above o-ring housing with #8 round bur. 7. Insert red or black retentive o-ring with string-packer or ball burnisher.

O-Ring Insertion Tool



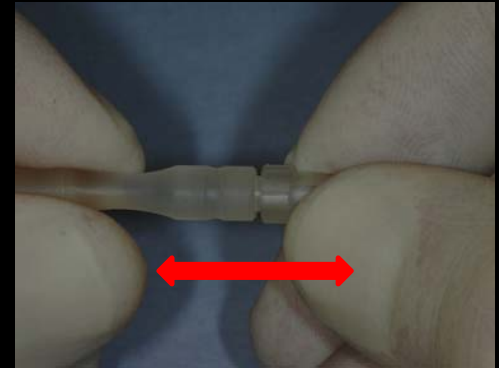
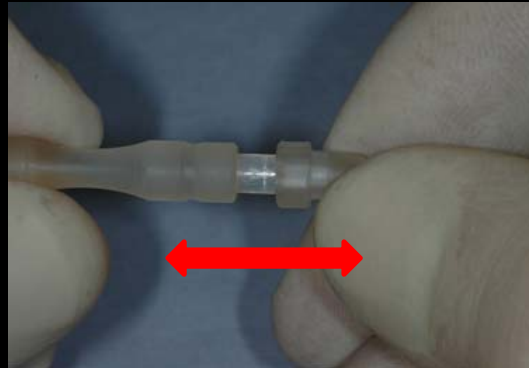
Micro O-Ring
3.5 mm (OD)
For 1.8 mm Ball

Standard O-Ring
4.5 mm (OD)
For 2.25 mm Ball

Part # 8046

Available from Zest Anchors @ (760) 743-7744

O-Ring Insertion Tool

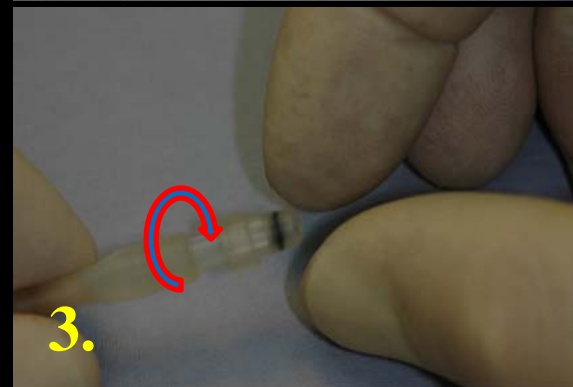
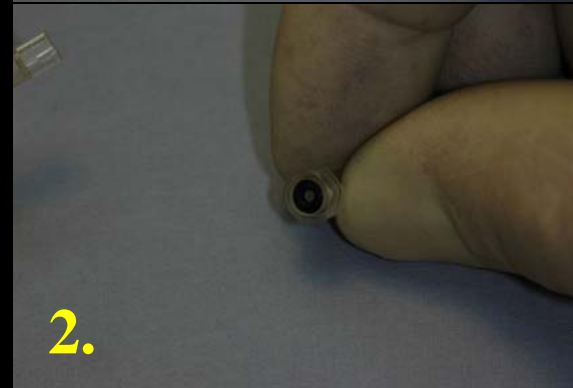
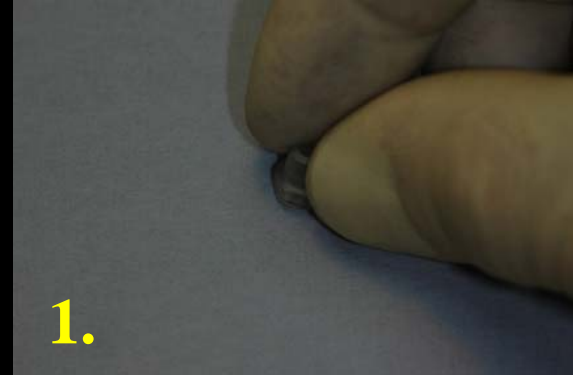


Prior to use, remove ferrule and lubricate shaft with K-Y Jelly

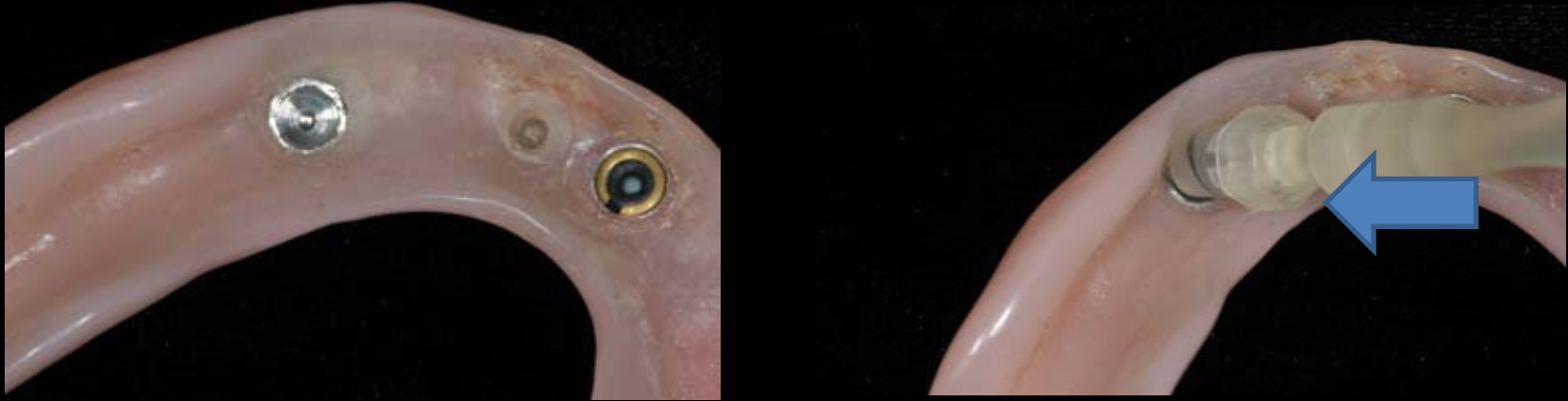
O-Ring Insertion Tool



1. On a flat surface, cover o-ring with wide end of ferrule.
2. O-ring seated in ferrule.
3. With a twisting, clockwise motion, seat ferrule containing o-ring on shaft.



O-Ring Insertion Tool



Place nose of ferrule in empty o-ring cap embedded in denture and press o-ring to place.



SATURN O™



A pivoting o-ring cap for use on divergent or nonparallel o-ring abutments or o-ring implants (standard or micro).

Available from Zest Anchors @ (760) 743-7744

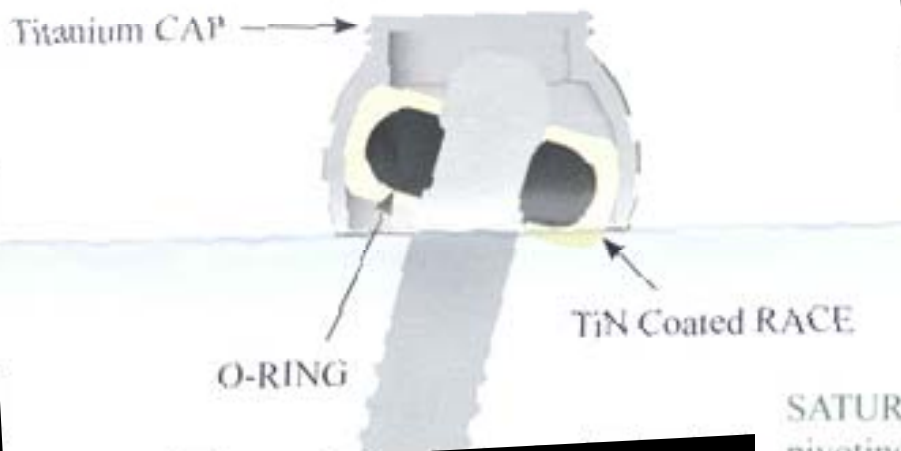
SATURNO™

Up to 30° angle correction



SATURNO™

PIVOTING O-RING CAP for use on existing O-Ring Ball Abutments or O-Ring Implants



SATURNO™ Standard pivoting O-Ring Attachment



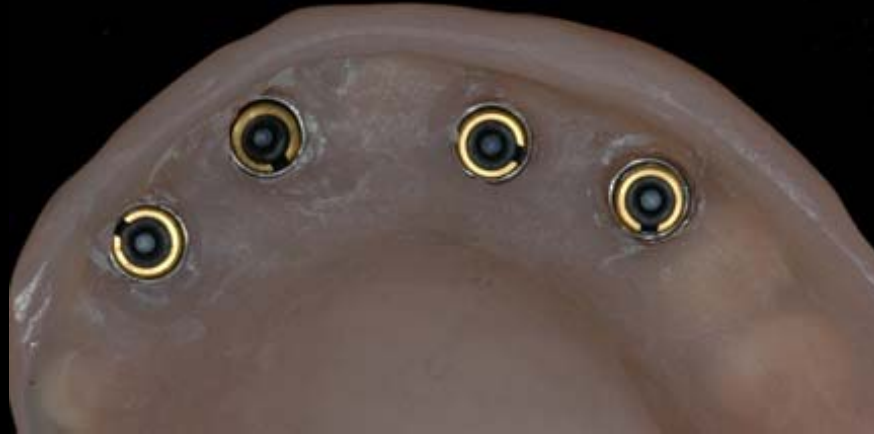
(Uses 4.5mm outside diam. O-ring for 2.25mm Ball)

SATURNO™ Micro pivoting O-Ring Attachment

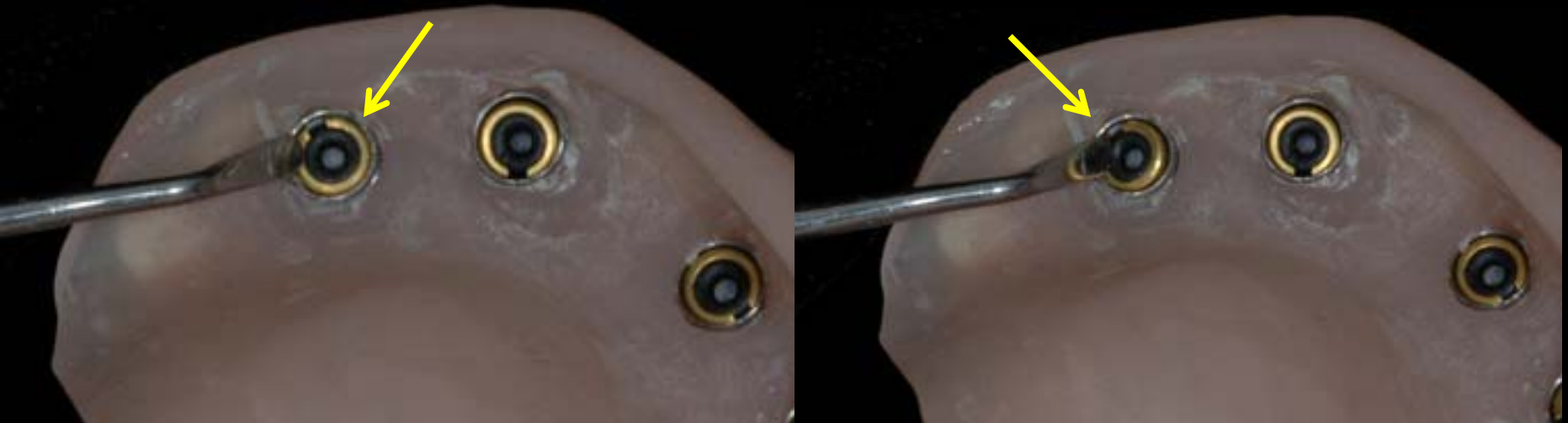


(Uses 3.5mm outside diam. O-ring for 1.8mm Ball)

SATURN *O*TM



Internal ring freely pivots within cap to accommodate nonparallel or divergent implants and abutments heads.



SATURN O™



Because housings freely rotate, lab putty is used to hold them in place during lab processing or direct bonding in mouth.

