

SDI

poladay CP

ADVANCED TOOTH WHITENING SYSTEM

I
N
S
T
R
U
C
T
I
O
N
S

SDI

poladay CP

35% carbamide peroxide
advanced tooth whitening system

INSTRUCTIONS FOR USE
FOR PATIENTS AND
DENTAL PROFESSIONALS

E
N
G
L
I
S
H

Pola Day CP is a 35% carbamide peroxide, high viscosity, neutral pH take home tooth whitening gel. It is a pleasantly flavoured, crystal clear sustained release gel with a water content high enough to reduce sensitivity.

INDICATIONS FOR USE:

- Whitening of discolored vital teeth.
- Whitening of discolored non-vital teeth.

COMPOSITION: 35% Carbamide peroxide
40% Water
0.5% Flavour
24.5% Thickening agents

PATIENT PLACEMENT PROCEDURE:

1. Brush teeth. Remove the syringe cap and insert an application tip by twisting it securely onto the syringe.
2. Place a small drop of gel into every compartment of the tray for the teeth undergoing treatment.
3. Seat the tray, with the gel around the teeth.
4. Wipe away excess gel in mouth with a tissue or dry soft brush.
5. After 15 minutes of treatment, remove tray. Rinse tray and mouth with lukewarm water.
Note: Treatment time can be up to 30 minutes if required.
6. Brush teeth.

IN-OFFICE JUMP START (FOR DENTAL PROFESSIONALS)

When used as a jump start in the dental office, treatment time is 30 minutes.

STORAGE AND HANDLING:

Store product in the refrigerator (2°-8°C / 35°-45°F).
Do not use after expiration date.
Use product at room temperature.

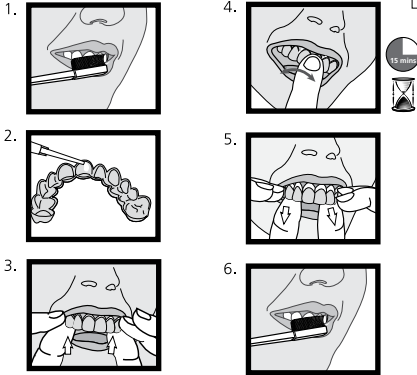
PRECAUTIONS:

To be used under the supervision of a dentist.
Do not eat, drink or smoke during treatment.
Do not smoke immediately after treatment - wait for at least two hours.
Food and drinks containing strong colours should be avoided or consumed in moderation during the entire treatment period.
Keep out of reach of children and pets.
Not to be used by pregnant or lactating women or children under 14 years old.
Patients with a history of chemical allergies are advised to carry out allergy testing by a specialist before using this product.
Discontinue use if any unusual sensitivity or reactions occur and consult your dentist.
Do not inject Pola Day CP into the body.
CAUTION: FEDERAL LAW RESTRICTS THIS DEVICE TO SALE BY OR ON THE ORDER OF A DENTIST.
MSDS available at www.sdi.com.au or contact your regional representative.

FIRST AID:

Eye (contact): Wash thoroughly with water and seek medical advice if symptoms persist. **Skin/Tissue (contact):** Wash thoroughly with water and seek medical advice if symptoms persist. **Ingestion (large amount):** Drink plenty of milk or water and seek medical advice.

Date of issue of last revision : December 2010



Made in Australia by SDI Limited

Bayswater, Victoria 3153
Australia 1 800 337 003
Austria 00800 022 55 734
Brazil 0800 770 1735
France 00800 022 55 734
Germany 0800 100 5759
Ireland 01 886 9577
Italy 800 780625
New Zealand 0800 734 034
Spain 00800 022 55 734
United Kingdom 00800 022 55 734
USA & Canada 1 800 228 5166
www.sdi.com.au

EC REP

SDI Dental Limited
Block 8, St Johns Court
Swords Road, Santry
Dublin 9, Ireland
Tel +353 1 886 9577

Warning



Causes
skin & eye
irritation

